

New York City Clubhouse Coalition Employment Statistics: FY 03

Thirteen Clubhouses Reporting

Number of Employers (all types of employment)	FY 00	FY 02 (N=14)		FY 03 (N=13)	
		Includes FH	Without FH	Includes FH	Without FH
	153	182	140	289	148
*Number of Employers (TE & SE)	71	133	90	157	104

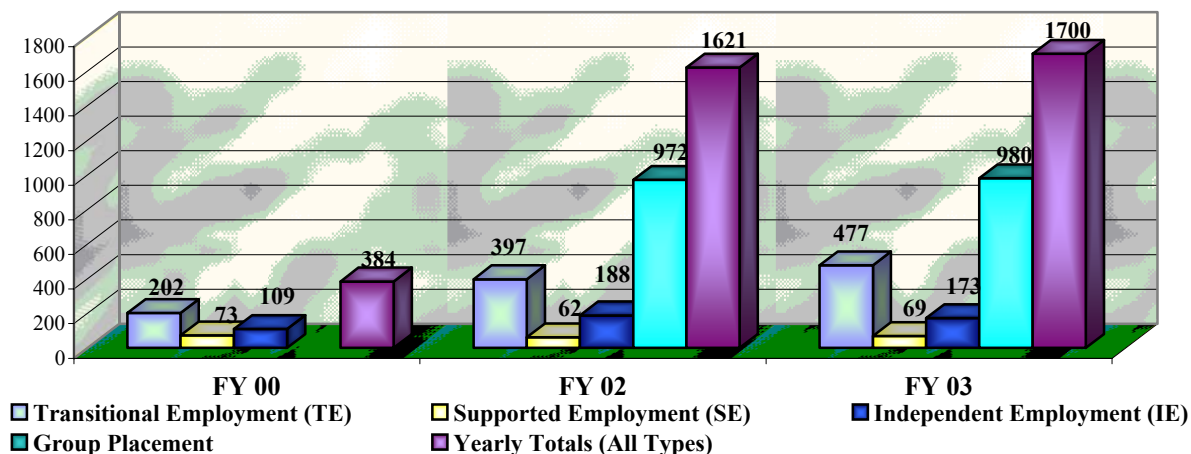
Average Weekly Schedule by Employment Type - FY 03

	Avg Hours/Week	Ave Days/Week
Transitional Employment (TE)	11.3	4.5
Supported Employment (SE)	19.2	4.1
Independent Employment (IE)	10.5	4.5

Average Wages (Dollars per Hour)

	FY 00	FY 02	FY 03
Transitional Employment (TE)	\$5.99	\$8.01	\$8.07
Supported Employment (SE)	\$6.04	\$8.18	\$7.63
Independent Employment (IE)	\$7.32	\$9.88	\$9.60

NYCC Job Placements - FY 03

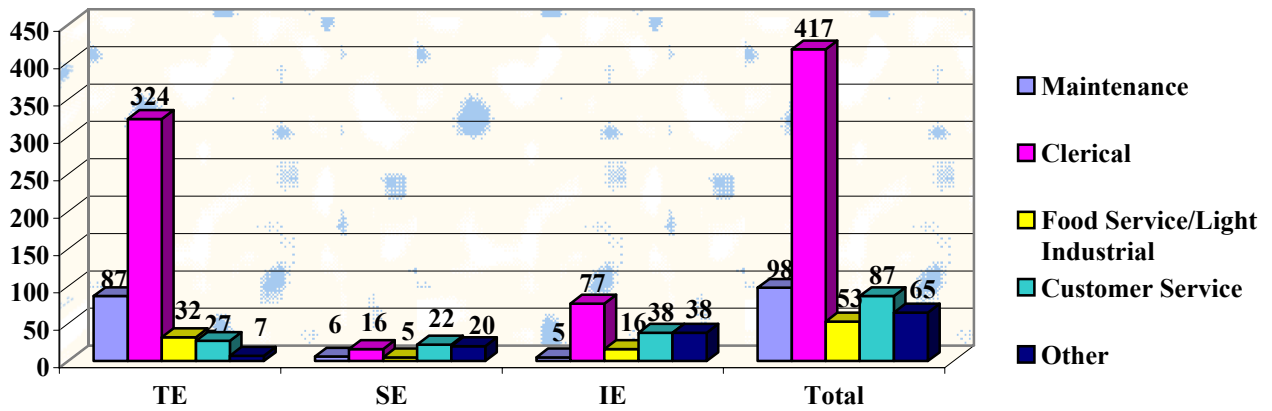


Number of Members Employed (All Types of Employment)

FY 00: 384 FY 02: 720* FY 03: 826

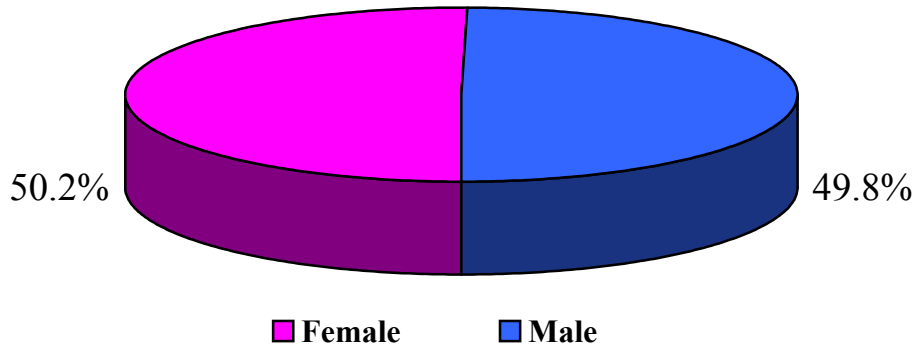
Total Combined Earnings of Clubhouse Members in NYCC Clubhouses in FY 03: \$1,897,342.00

Number of Placements by Job Type & Job Classification - FY 03



NYCC Member Demographics (employed members)

Gender Composition of Employed Members



Mean Age of Employed Members: 49.8 years Females: 50.7 years Males: 48.8 years

Mean Length of Membership (excluding Fountain House): 3.08 years range .02 -13.29 years

NYCC Clubhouse Demographics

Average annual budget (excluding Fountain House): \$515,664.62

Number of active members (excluding Fountain House): 162.6

Average Daily Attendance (excluding Fountain House): 45.0

Total Members (excluding Fountain House): 422.2

Average number of paid staff (excluding Fountain House): 9.0

Mean length of operation (excluding Fountain House): 9.4 years (range 1.7 - 15.2 years)